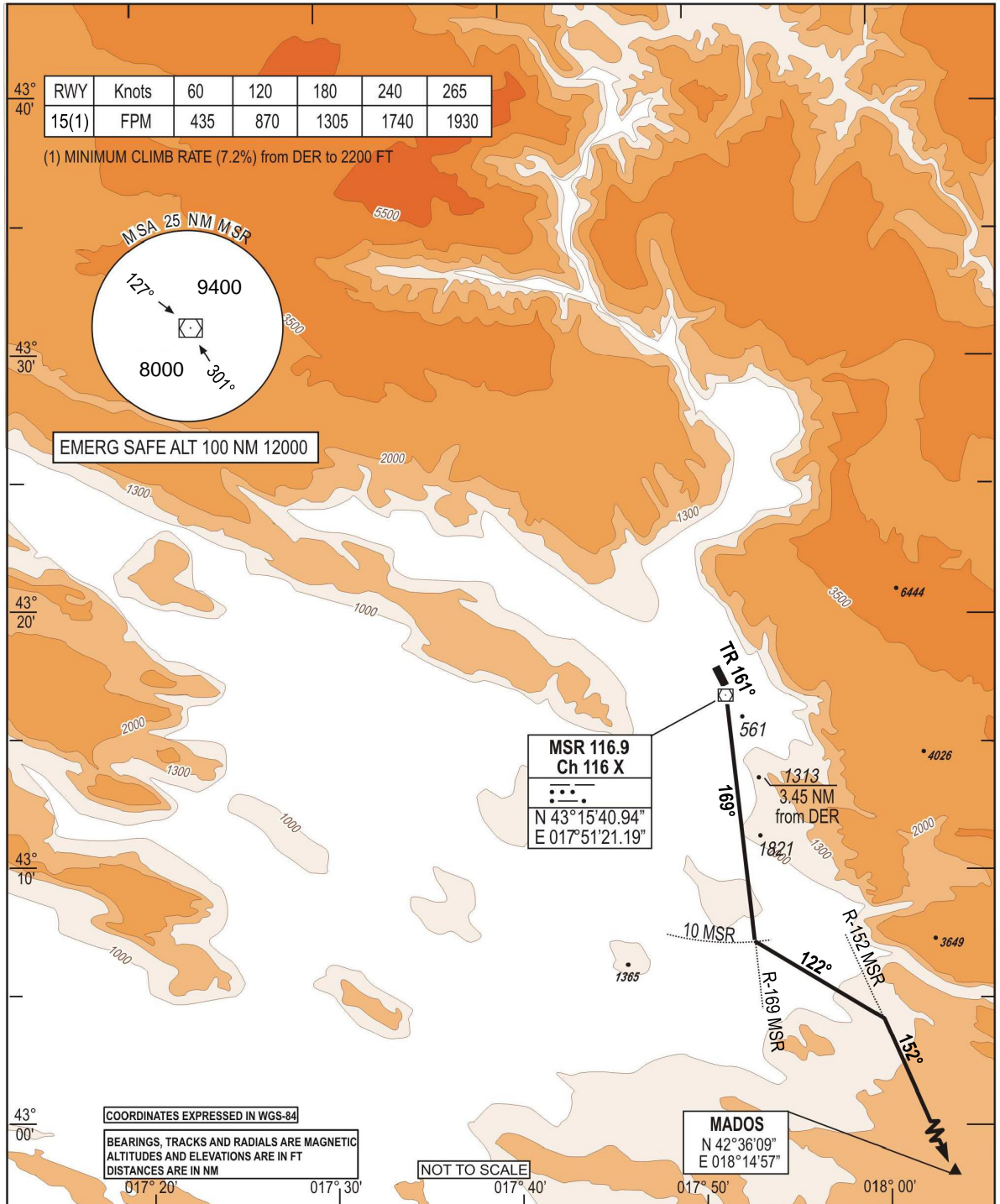


**STANDARD DEPARTURE CHART
INSTRUMENT (SID) - ICAO**

TRANSITION
ALTITUDE
10 000 FT
VAR 5°E (2020)

APP 120.225
129.875
TWR 125.550
ATIS 126.225

**MOSTAR (LQMO)
MADOS 1B RWY 15**



CHG: MSA UPDATED

SID	DEPARTURE ROUTE DESCRIPTION
MADOS 1B (RWY 15)	<ul style="list-style-type: none"> - After DER, climb on TR 161° then R-169 MSR(1) to 10.0 D MSR (1) Minimum climb rate : 7.2% from DER to 2200 FT - At 10.0 D MSR , turn left RM 122° to intercept R-152 MSR inbound direct to MADOS. - Then as directed by ATC

THIS PAGE INTENTIONALLY LEFT BLANK